

## Annual General Meeting

Thursday 30 June 2016, 7.30pm at Selwood House

### AGENDA

1. Apologies for absence
2. To approve the minutes of the last AGM held on 24 June 2015
3. Chairman's report
4. Treasurer's report
5. To approve the accounts of the Association to 5 April 2016
6. Election of Officers and Committee and reappointment of Independent Examiner
7. To confirm Road Fund contributions of £40 for 2016/17

### Present Officers and Committee

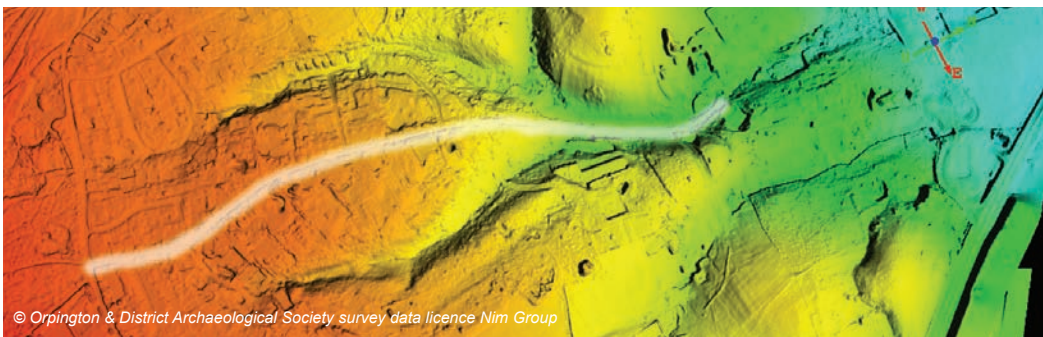
**NB.** All posts are subject to re-election annually at the AGM. Nominations for Officers or Committee should be made to the Chairman in writing before the AGM.

Chairman	David Viles	Inglewood Cottage
Vice Chairman	Anthony Burrett	Nizels
Treasurer	Avril GreatRex	Trees
Secretary	Vinod Khanna	20 Pickwick Way
Committee members:	Tony Allen	The Coach House
	Lin Limbrey	Middlemarch
	Alec McTavish	17 Worsley Grange
	Graham Pedgrift	Westerland Lodge

The Committee thanks Selwood House for the use of their Amenity Room for the AGM and Committee meetings throughout the year. The entrance shares a drive with Willett House Mission Care.

### LiDAR Image of Kemnal Road

LiDAR imaging looks through the trees to ground level, showing land features, many of them completely hidden to us at ground level.



# KEMNAL RESIDENTS ASSOCIATION

Summer 2016

[www.kemnal-road.org.uk](http://www.kemnal-road.org.uk)

## NEWSLETTER – SUMMER 2016

### A.G.M

**Thursday 30 June 2016, 7.30pm  
at Selwood House**

### AN APPEAL - KEMNAL ROAD IS YOUR ROAD!

Kemnal Road is unadopted by Bromley Council, and its maintenance (including the footpath and grass verge) is therefore entirely the residents' responsibility. For this purpose, each household in Kemnal Road and the roads leading off it is asked to make an annual subscription to the Road Fund.

KRA has been in existence since 1985 in succession to the Kemnal Road Residents' Association, and is headed by a Committee of volunteers. The Committee is elected annually by residents and several of its members have served for many years. None of us is getting any younger. **We urgently need new blood on the Committee**, particularly someone with financial experience who can take over from our long-serving Treasurer. A successful residents' association needs committed and active members, and if willing volunteers do not step up to the plate the future of the Association (and therefore the condition of the road) is bleak. If you feel able to give some time to ensuring Kemnal Road continues to be one of the most attractive roads in Chislehurst, please contact the Chairman, David Viles, on 020 8467 4159.

### THE AGM

This is the one time when we, as residents, can get together to discuss the maintenance of the road and its environs, how your subscriptions are spent and talk about matters of mutual interest which have arisen during the year. The Committee really does appreciate your input – **so please come and share the meeting, and enjoy a glass of wine (or soft drink) with us afterwards!**

The agenda for the AGM and details of the present Officers and Committee are on the reverse of this newsletter



### INTRODUCTORY TALK

We are looking forward this year to an introductory talk from **Sam Pettman**, the National Trust Ranger for Petts Wood and Hawkwood. Sam's talk is entitled "**The history and management of the National Trust's Petts Wood and Hawkwood Estate**". Sam's talk will start at 7.30 preceding the business part of the AGM.

### OUR ONLINE PRESENCE

#### KEMNAL ROAD WEBSITE — [www.kemnal-road.org.uk](http://www.kemnal-road.org.uk)

Just to remind you, this website gives details of the KRA Constitution and access to AGM and Committee minutes, as well as many facts and illustrations about the history of our attractive road. The website will also keep you up to date with current issues.

#### E-MAIL ALERTS

We are working to set up an e-mail facility for members to communicate directly with the Committee. If you are interested in this, please complete and return the enclosed residents' survey (see overleaf) so we have your e-mail address.

#### TWITTER

Kemnal Road now has a Twitter Account - [@KemnalRoad](https://twitter.com/KemnalRoad). Keep up to date by following us!

#### CONTACT US

To contact us online with any comments or problems — [Comments@kemnal-road.org.uk](mailto:Comments@kemnal-road.org.uk)



## ROAD MATTERS

- Potholes and irregularities in the northern part of the road have been repaired this year. Otherwise, the road appears to be standing up well to current volumes of traffic and no major repairs have been necessary.
- The edge of the roadway outside Mulbarton Court has deteriorated significantly in recent years, largely due to vehicles parking and wearing down the road edge causing mud and puddles to form in wet weather. A new kerb was therefore installed in the spring to protect the edge of the road and divert rainwater away. We are grateful to residents along this part of the road for their financial contribution to this work which has greatly enhanced the appearance of the road.
- It has been suggested that action needs to be taken to slow traffic between Foxbury Manor and Dickens Drive. What's your view? See the item on the residents' survey below.
- There are always tasks to do such as cutting back encroaching vegetation and trimming trees. Your Committee members are happy to do this, but extra help at occasional weekend working parties would be greatly appreciated. Please contact the Chairman if you can help. Tel: 0208 467 4159.

## RESIDENTS' SURVEY

We do need to know what you think about various aspects of the road so we can plan ahead more effectively. Enclosed with this newsletter is a survey questionnaire, which some residents may already have received by e-mail. **Please help us by completing the questionnaire** – it is very easy to fill it in online at <https://www.surveymonkey.co.uk/r/KVHB66W>. If you cannot access the internet please complete the questionnaire and drop it into the Coach House letterbox before 24 June.

## AMENITY STRIP

This is the wooded area between The Coach House and Ashfield Lane. The Amenity Strip is administered by 4 Trustees, who are also Committee members of the Association. The Trustees have no funds, and members at the AGM have agreed to contribute up to £1,000 per year to allow the Trustees to carry out essential safety works to lop overhanging branches, fell rotten trees and control vegetation affecting the road; and also to fund any further safety work which might be needed in future years. Tree safety work was undertaken along the Amenity strip last year and the Trustees are intending next year to tidy up the area at the junction with Ashfield Lane.

## THE WIDER AREA

The KRA, the Chislehurst Society and others have made repeated representations to LB Bromley to do something about the hazards to traffic caused by parking at the southern end of Kemnal Road, towards the junction with Bromley Road. We are pleased that timely action has been taken to prohibit parking on this stretch of road and our combined efforts have made a difference.

The Association is one of the bodies which LB Bromley has undertaken to consult on any proposals to reconfigure the roads around the Common in order to reduce the number of accidents. We will keep everybody informed of developments via the website and by e-mail.

## NEIGHBOURHOOD WATCH

Our NHW Coordinator is Lin Limbrey, who lives at Middlemarch.

To receive up to date information on NHW matters, you only need to register your interest. Please email Lin at [lin.limbrey@virginmedia.com](mailto:lin.limbrey@virginmedia.com)

**The Chislehurst Police Safer Neighbourhood Team** patrols the area on a regular basis. Phone 020 8721 2612.

## ROAD FUND

At last year's AGM, members decided in principle to **increase the subscription in 2016/17 by £5 per household to £40**. Your Committee asks members to confirm this increase at the AGM. This will allow a reserve to be built up to cope with any emergencies and contingencies. Providing there are no major unexpected events, no further increase will be needed for at least the next 2 years.

## MATTERS RAISED AT THE 2015 AGM

- *Garden plants and dustbins in Ashfield Lane obstructing the sightlines of drivers exiting from Kemnal Road: LB Bromley officers have investigated and do not consider there is a significant problem.*
- *Difficulties for pedestrians in crossing Ashfield Lane safely: The Association will continue to bring this matter to LB Bromley's attention.*
- *Parking in Dickens Drive obstructing vehicles turning into and out of Kemnal Road: The Association will continue to bring this matter to LB Bromley's attention.*